

KIP AutoCAD 2000 / 2000i / 2002 / 2004 HDI Driver

Version 2.36, Document Release 5.2.2003.2

1. Overview and Features

The KIP America provided driver for AutoCAD 2000, 2000i, 2002, and 2004 has been designed to quickly and effectively plot to your KIP directly from the AutoCAD interface under Windows 95/98/ME/NT/2000/XP. Features and functionality of this driver can work in tandem with our Powerprint Request software for added power and flexibility, or as a stand-alone entity.

2. Output / Linking Options:

- Powerprint Request / Plot to Port

Allowing the AutoCAD driver to interface with Powerprint Request provides the most versatile and powerful printing solution from AutoCAD 2000/2000i/2002/2004. Powerprint Request is KIP America's document submission tool that allows for complete and comprehensive control over printing/plotting. When the AutoCAD driver is linked to Powerprint Request, users have the ability to obtain real-time printer/plotter status, password protect job submissions based on user and job information, apply custom made stamps, activate folder equipment, and modify job descriptions. The AutoCAD driver was designed to take advantage of, and dynamically link to, Powerprint Request, bringing many of these key features to the AutoCAD interface. It is recommended that the AutoCAD driver be configured in this manner. If you opt not to link with Powerprint Request, certain features of the driver will not be available to you (i.e. real-time printer status, password protected pull-down menus, and stamping). This document illustrates a situation where Powerprint Request is utilized and installed properly. Installation instructions and further documentation for Powerprint Request are located on your Powerprint software compact disc that came with your KIP system.

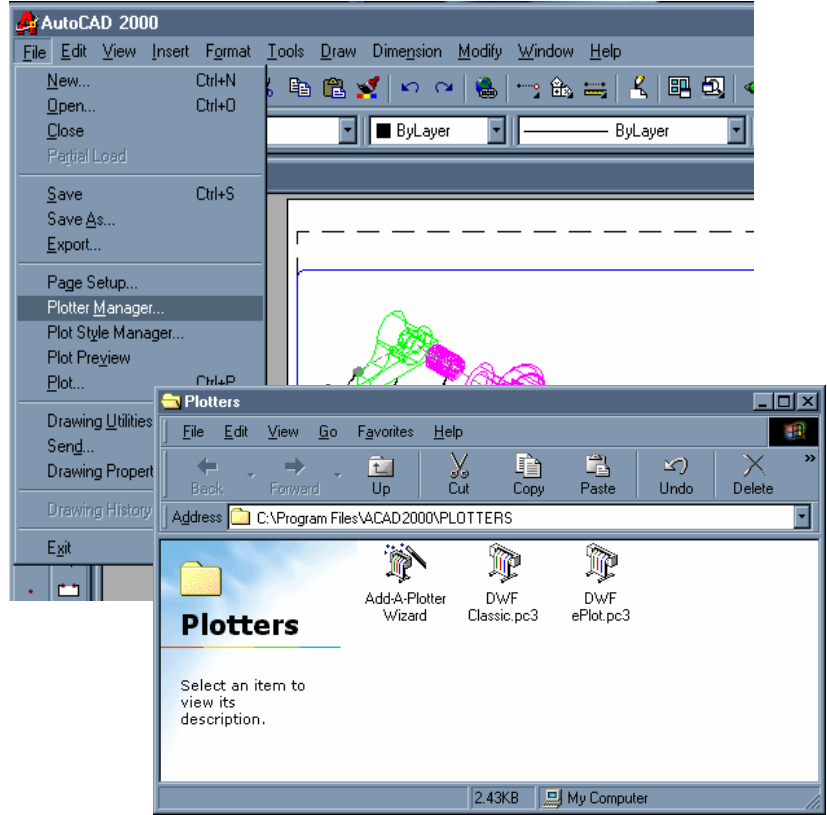
- Plot-to-file

The AutoCAD driver can also output to a file. Whereas this is a viable option to print, it is the least recommended as a DIRECT plot method. Use this option only if you are plotting for archival purposes, or creating a print file for a printing service.

3. Initial Installation

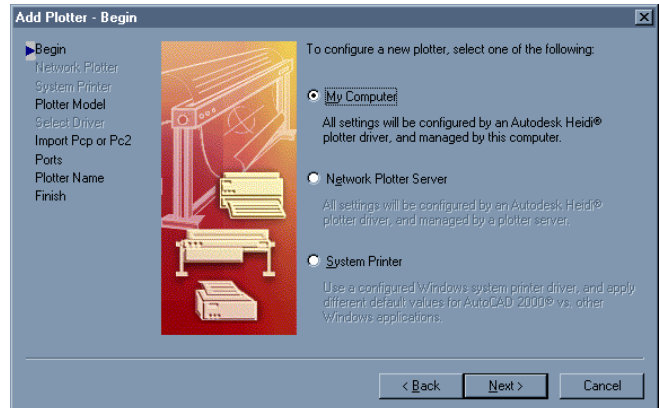
Within AutoCAD 2000/2000i/2002/2004, click on the “File” pull down menu, and select “Plotter Manager.”

You should then see a Plotters dialog box, as shown below. Double Click “Add-A-Plotter-Wizard”

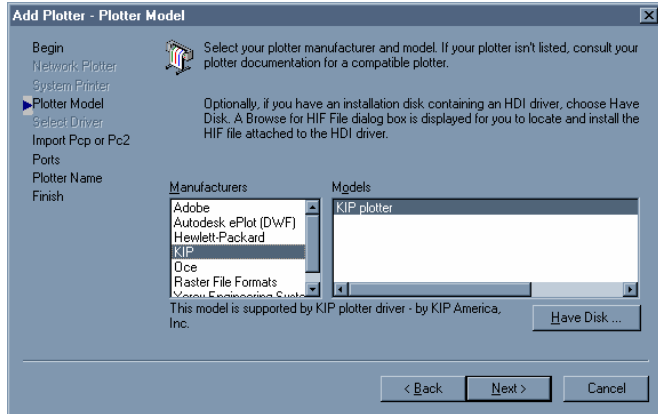


The initial Wizard screen (shown above) starts by explaining that AutoCAD 2000 has changed from the PCP and PC2 file formats to a PC3 file format and will offer another screen during the installation process to migrate your PCP and PC2 to PC3 files for use in AutoCAD 2000.

The next screen (shown here) should be set to the default “My Computer” to install the driver on your local computer.

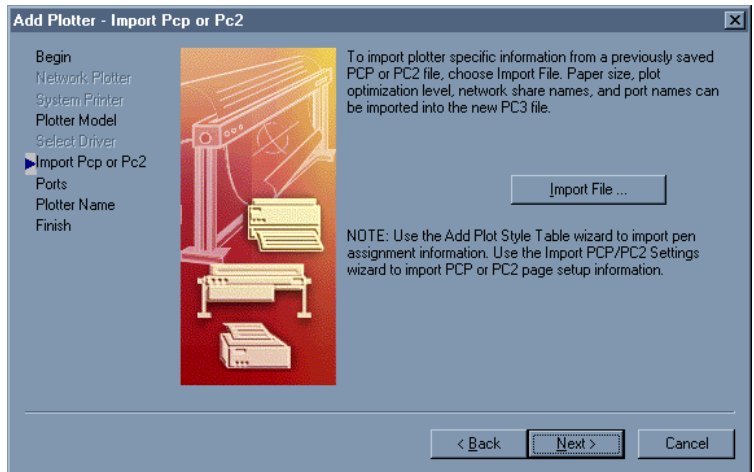


The next step is to identify your plotter model. If KIP is in the list, simply select KIP from your list of manufacturers and click "Next." If KIP is not in the list, click the "Have Disk" button and you will be able to browse for a plotter driver .HIF file. The .HIF file is located in \AutoCAD Drivers\ on your Powerprint 5.0 CD. Once you have pointed to this file KIP should appear in the list and you may select it from your list of manufacturers and then click "Next."

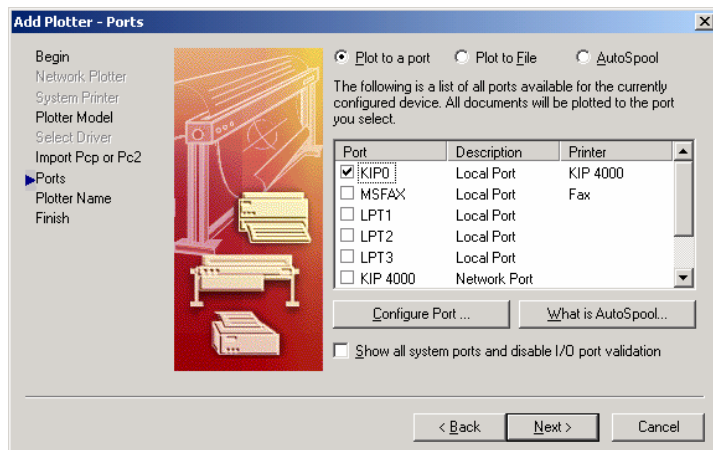


- * KIP6.hif is used for AutoCAD 2000. KIP7.hif is used for AutoCAD 2000i/2002.
- * KIP8.hif is used for AutoCAD 2004.

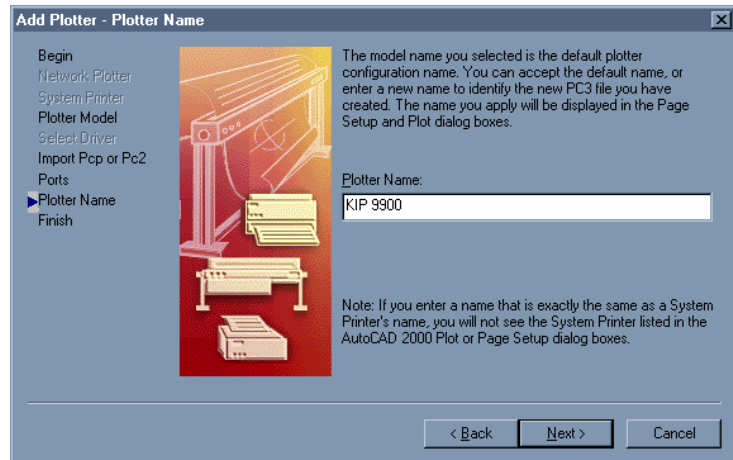
This next screen is the PCP and PC2 import screen (as discussed earlier.) This screen allows PCP and PC2 files to migrate to an updated PC3 file format. If you do not wish to migrate, or you do not have any PCP or PC2 files to migrate, you may simply click the "Next" button and proceed with the installation.



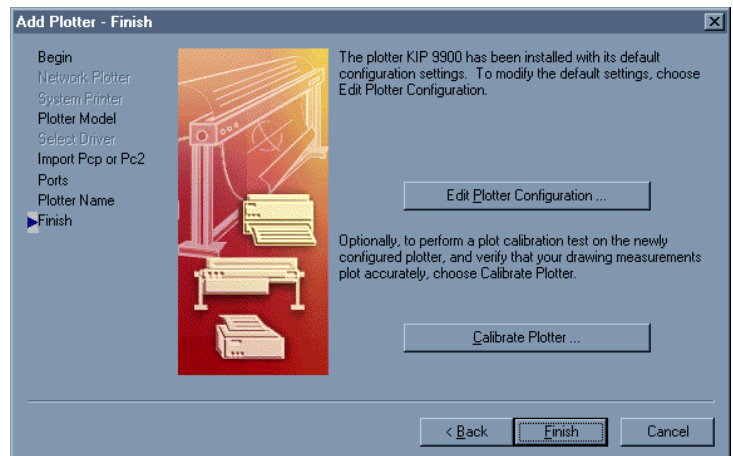
Next, specify "Plot to a port". Select the appropriate Port. This will either be "KIP0" (if Windows Driver has been installed locally) **OR** `\\SERVER\PRINTERNAME` if you have connected to the Windows Driver from a server share.



Specify a name for your plotter. We recommend you use the printer models as a suitable name.



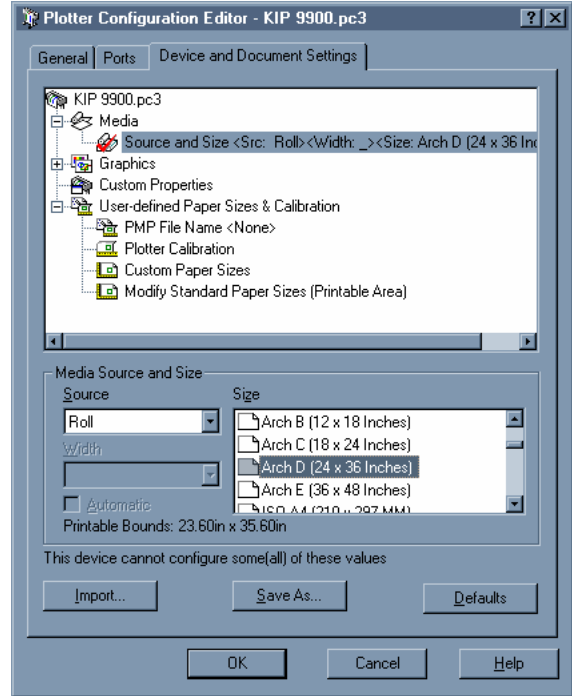
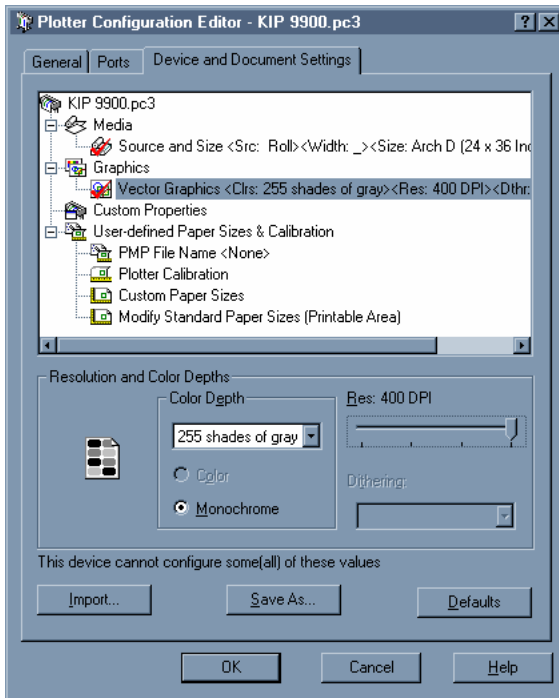
To finish the installation, click "Finish". Plotter configuration can come later and there is no need to "Calibrate Plotter" as the KIP is already calibrated upon installation.



Once installation is complete you will notice a new .PC3 file for the plotter you just added. To configure the plotter, double-click on the .PC3 file.

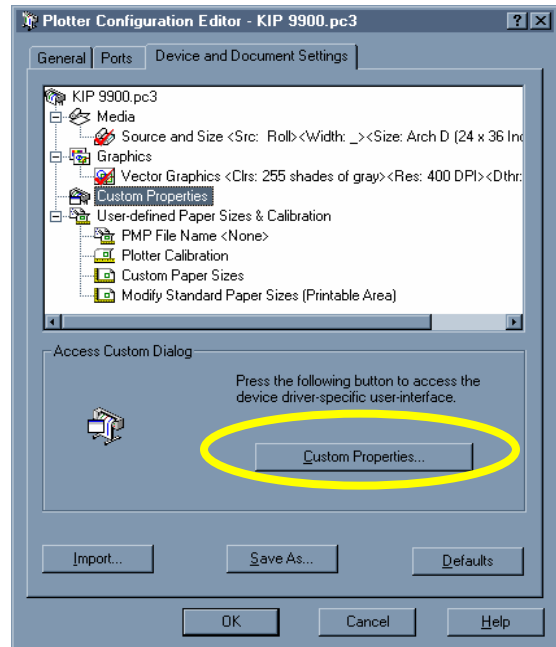
4. Configuration

By double-clicking the .PC3 file you will open the Plotter Configuration Editor. Navigate to “Device and Document Settings” and click the + sign next to the “Media” Icon. This will open up the Media options and allow you to choose your Media Source (which is “Roll”) and Media Size (which in this case is “Arch D 24x36 inches.”)



Next, click the + sign next to the “Graphics” icon. This will open up the Graphics options and allow you to choose your Color Depth (in this case “255 shades of gray”) as well as Resolution (in this case “400 dpi.”)

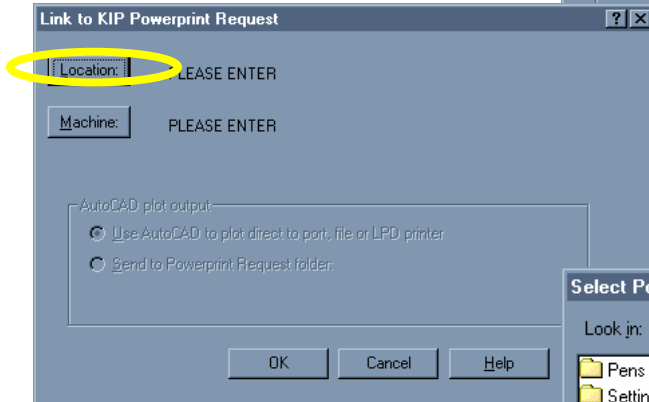
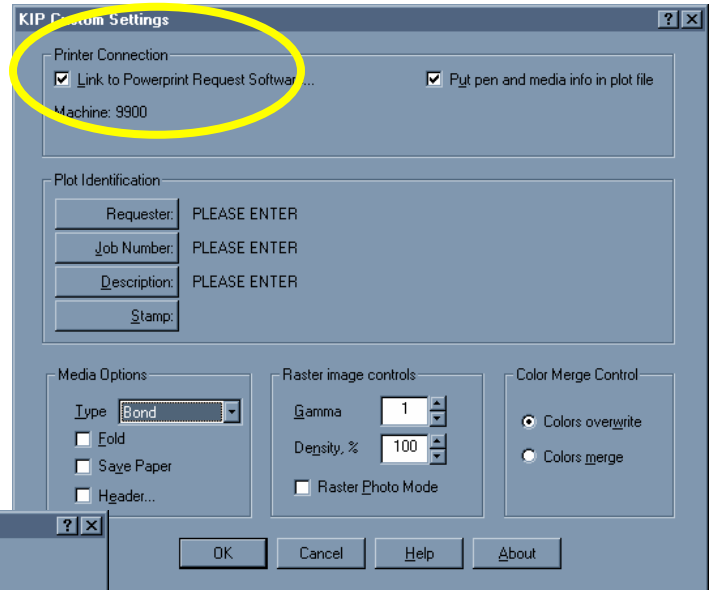
Next, click “Custom Properties”. A “Custom Properties” button will appear.



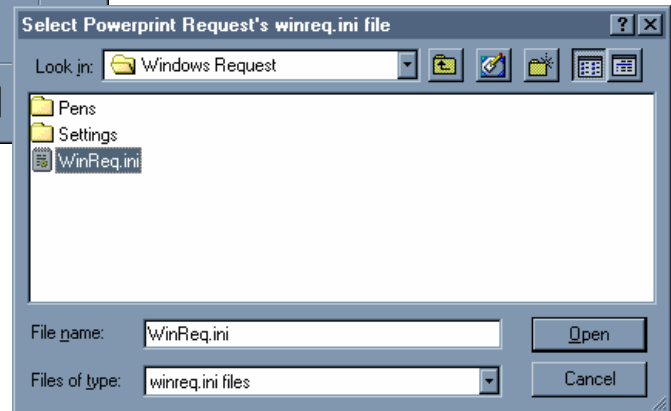
By clicking the “Custom Properties” button, KIP Custom Settings dialog box will appear. These features are enabled by “linking” the AutoCAD driver to Powerprint Request, and are used for DIRECT PLOTTING. **IF YOU ARE SIMPLY USING THE DRIVER TO PLOT TO FILE FOR A PRINTING SERVICE, THIS STEP IS NOT NECESSARY. SKIP TO STEP 5.**

By clicking the “Link to the Powerprint Request Software” checkbox you will be asked to locate the Powerprint Request .ini file (this is the file the HDI driver uses to employ the Powerprint Request features

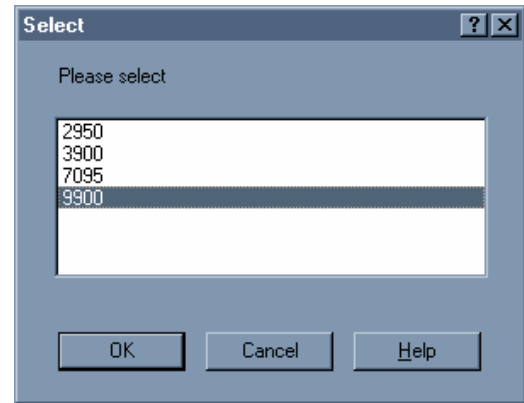
A dialog box asking you to locate the winreq.ini file will appear. Click on the “Location” button.



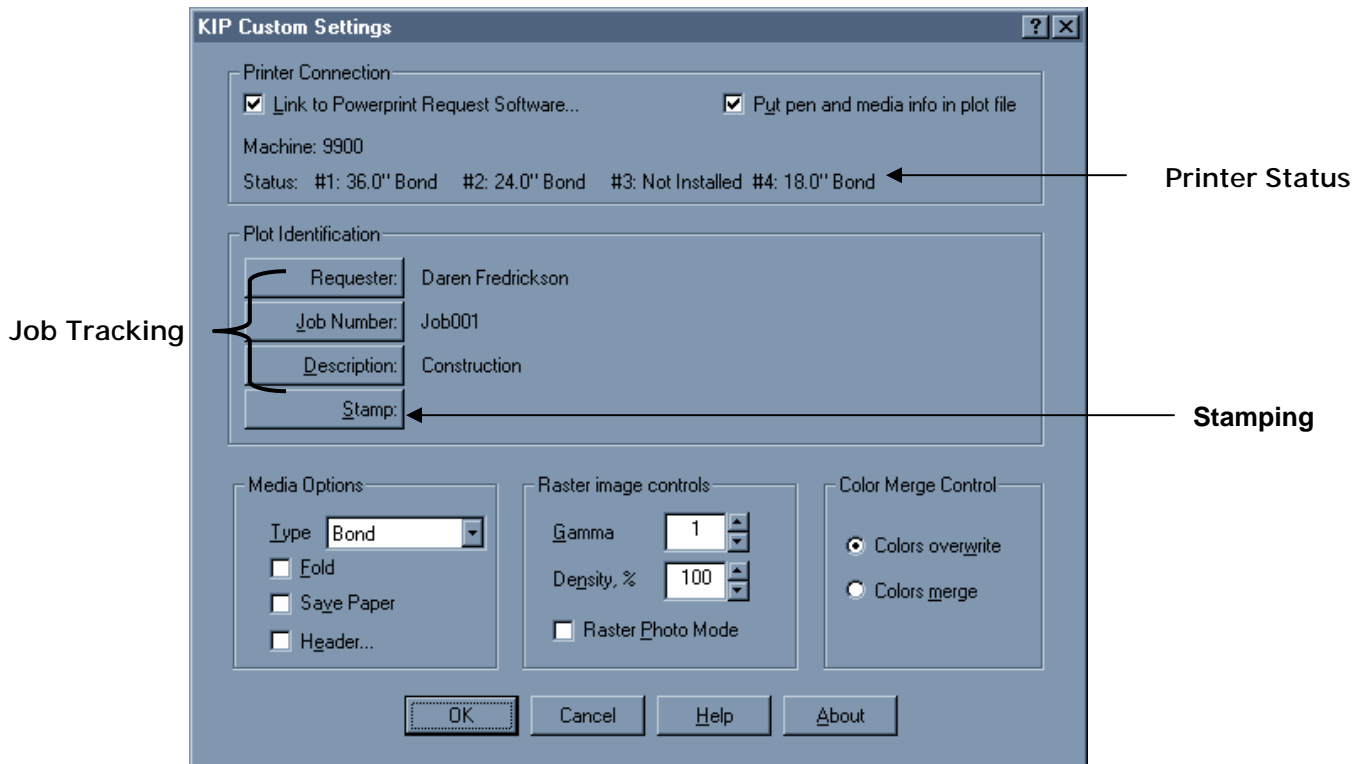
If Request is loaded it should point to the default location, for your .INI file. Double click on Winreq.ini.



If you have multiple KIP printers on-site, you will be prompted to select a model. Click "OK" to finish.



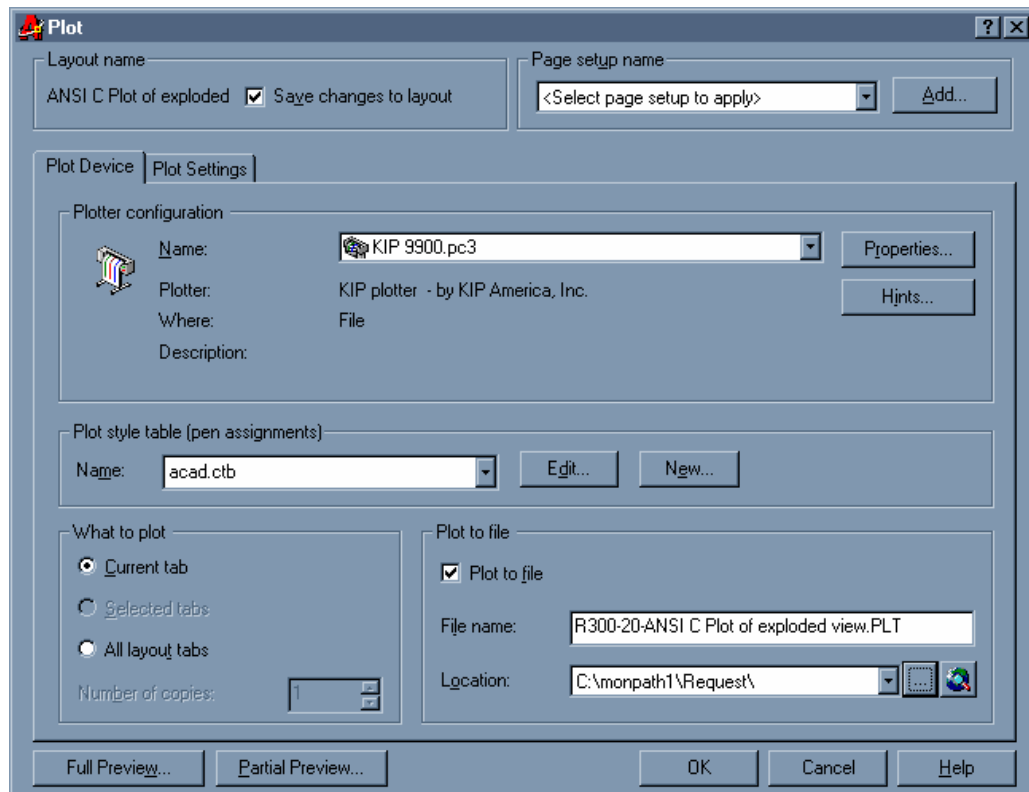
KIP Custom Settings dialog box will reappear. Printer Status will appear where indicated. Track your printing directly from the AutoCAD application by Requester, Job Number, and Description. Click 'OK' to finalize selections.



5. Plotting

From the Plot Menu, ensure you have the correct PC3 selected as your PLOT DEVICE. Click “OK” to plot.

If you wish to create a .PLT file for a printing service, select “Plot-To-File” and specify a suitable output location.

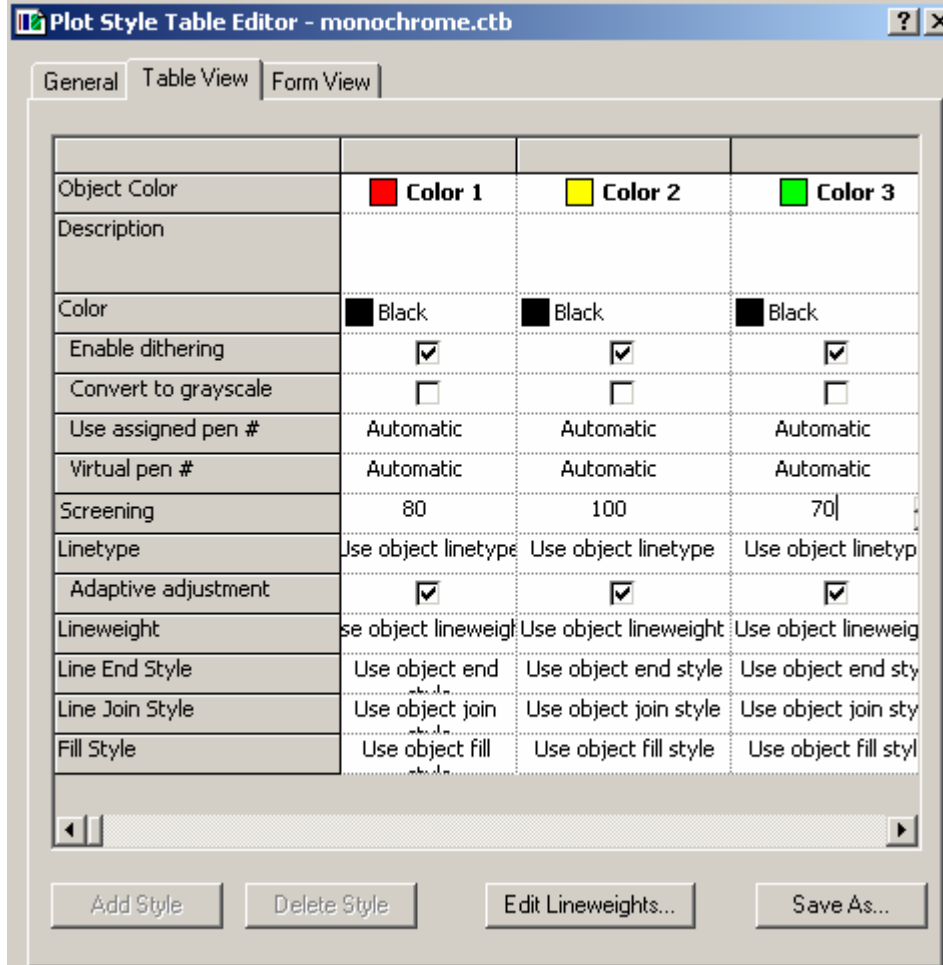


6. Important Notes about ColorTables (.CTBs) for CAD users.

KIP America suggests using a *Monochrome Based Color Table*. “Object Colors” refer to onscreen colors, whereas “Color” refers to plotted color.

The example shown below:

Object Colors: 1 (Red), 2 (Yellow), and 3 (Green) are assigned the plotted color BLACK, with a varying degree of shading of BLACK as shown by the “Screening” value. (80%, 100%, 70%).



6. Advanced Accounting Options

We have added the capability for using specialized names or “masks” for the accounting data fields in the Custom Properties of the KIP AutoCAD Driver (Requester, Job Number, and Description):

Specialized Mask Names and Rules

dwgname

dwgpath=x\x\x\x where = sign and following is optional mask to select path elements.
x replaced by # includes that element of path to be used in accounting data.

These customized names can be assigned to the mask elements using all normal methods.

For example: AutoCAD reports drawing path of drawing named "R300-20.DWG" and the path that the file is stored in as:

C:\Program Files\AutoCAD 2000\drawings\R300-20.DWG

If mask item is set to:

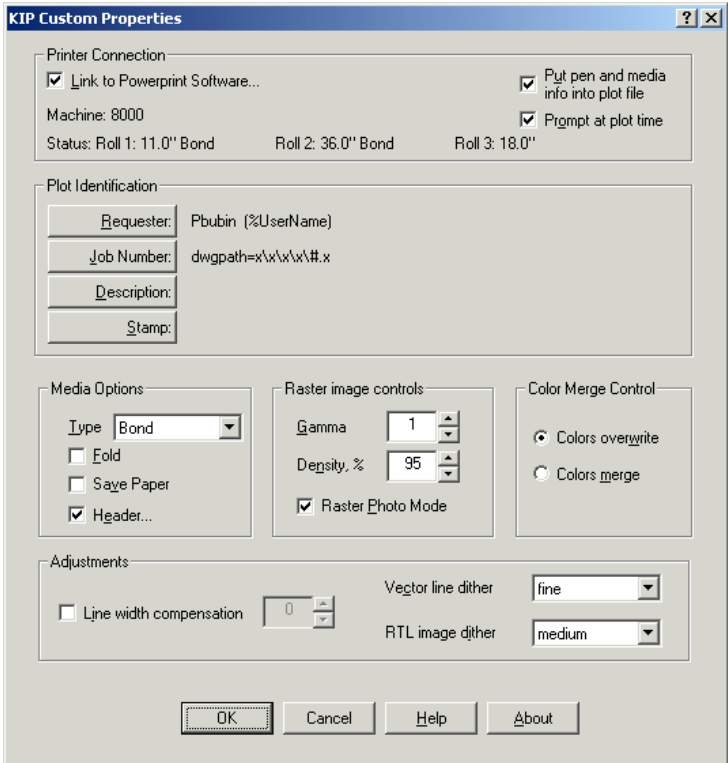
dwgname you get: R300-20 (just the file name)

dwgpath you get: c:\Program Files\AutoCAD 2002\drawings\ (whole path) as the accounting data.

dwgpath=x\#\x you get: Program Files

dwgpath=x\## you get: Program Files\AutoCAD 2002

There are three places that the “mask” can be entered on the KIP Custom Properties screen. Go to the AutoCAD Plotter Manager, choose the appropriate PC3. Choose Device and Document Settings, then Custom Properties. The mask can be used in any combination of the “Requester”, “Job Number”, and “Description” fields. Both the Requester and Job Number fields by default are recorded into the Powerprint Controller Accounting log.



While there are many additional configurable options this is the straight path to plotting to the KIP and/or plotting to file. If you have any installation or configuration concerns please contact the Digital Support Team at 1-800-252-6793.