

[KIP AutoCAD R.14 ADI Driver v. 1.00](#)

1. Overview and Features

The KIP AutoCAD R.14 ADI Driver has been designed to quickly and effectively plot to your KIP directly from the AutoCAD interface under Windows 95/98/NT. Features and functionality of this driver can work in tandem with our Poweprint Request software for added power and flexibility, or as a stand-alone entity.

General

- Plotter Name - Choose KIP Printer
- Requester – Specify user information
- Job Name – Choose Job Name/Number or Project Name/Number
- Stamp - Off or select stamp
- Copies - 1-999
- Buttons for Additional Dialogs, and display of current settings
- Media - Current Media Available
- Pens – 0 - 255 Pens
- Plotter status: Realtime
- Reset to default values

Media Dialog

- Paper Size [A, B, C ,D, E...] x (ANSI, ARCH, ISO..) or Custom
- Type [Bond, Vellum, Film, Custom]
- Orientation: Landscape/Portrait
- Units: English/Metric
- Margins: Top, Bottom, Right, Left
- Display Max Plot Area (calculated)
- Save paper
- Folder Activation

Pens Dialog

- Solid or Shade (0-100%) for each pen
- Line Ends (global for all pens): butt, round, square, triangle
- Merge or Overwrite (global for all pens)

Details Dialog

- Vector Resolution: 100, 200, 300, 400 dpi
- Number of Copies
- Photo Raster Mode
- HP-RTL Density Control

2. Link Options

- Powerprint Request
Allowing the KIP ADI driver to interface with Powerprint Request provides the most versatile and powerful printing solution from AutoCAD R.14. Powerprint Request is KIP America's document submission tool that allows for complete and comprehensive control over printing/plotting. This software can operate on several remote workstations simultaneously. *With Powerprint Request, users have the ability to obtain real-time printer/plotter status, submit collated job sets, password protect these submissions based on user and job information, apply custom made stamps, activate folder equipment, and modify job descriptions.* The KIP ADI driver was designed to take advantage of, and

dynamically link to, Powerprint Request, bringing *many* of these key features to the AutoCAD interface. **It is recommended that the KIP ADI driver be configured in this manner.** If you opt *not* to link with Powerprint Request, certain features of the KIP ADI driver will not be available to you (i.e. real-time printer status, password protected pull-down menus, on-the-fly stamping, and automated spooling). **This document assumes that Powerprint Request is utilized and installed properly.** Installation instructions and further documentation for Powerprint Request are located on your Powerprint software compact disc that came with your KIP system.

- LPD Printing

LPD printing is a powerful alternative solution for interfacing with your KIP equipment. The advantages of LPD printing are multifaceted. LPD is a print protocol native to UNIX based networks. Because the KIP controller is based on a Windows operating system, our printers/plotters appear as another "node" on a network, *not a shared printer*. This design was intentional because spooling data is inherently more time consuming and network intensive than simply dealing with actual data files. However, with continued demand and need for platform integration, LPD printing has branched off into new territory. LPD connectivity simply allows the KIP controller to accept spooled print jobs from Unix based networks, as well as display the KIP printer/plotter on a UNIX based network as a shared device. (Specifics on configuring LPD printing can be found in **Digital Support Bulletin NT-99-002R**) and is attached near of the end of this document for reference.

LPD spooling is also effective *within* Windows based networks, and will be primarily be used by those *not* employing Powerprint Request. It is important to note that some ADI features specific to Powerprint Request integration will not be available to users employing the LPD method (i.e. realtime printer status, password protected submission, and stamping).

- Plot-to-file


The KIP ADI driver can also function as an output to file device. Whereas this is a viable option to print, it is the least recommended, simply because *each and every print will need to be directed to a specific "monitor path" manually, and creates additional steps for the user.* AutoCAD has an option to "plot to file" within it's print dialogue window, and this must be activated for each print.

3. Initial Installation

Copy acad100.exe to a specified folder (i.e. C:\KIPADI) on your hard drive and double-click

Acad100.exe is a self-extracting archive/executable that contains the following files, all of which are necessary for proper installation:

Disk.id
Kipadi.001
Install.exe
Readme.txt
Install.dat
Ws_ftp.log

Once the extraction process is complete, double-click the readme.txt file. This describes the uninstall procedure should you ever need to remove the KIP ADI driver from your system. It is included near the end of this document, intact, for your reference. Double-click the install.exe icon  launch the automated installation process.

* Initially, you will see a welcome screen; click 'OK' to continue.

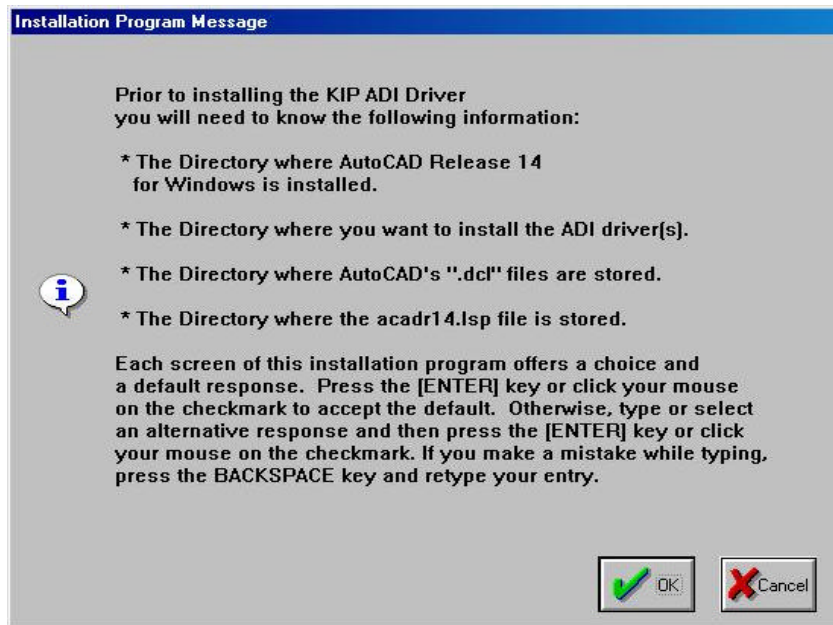


* Review the next screen that describes the driver license terms, click 'OK' to continue.

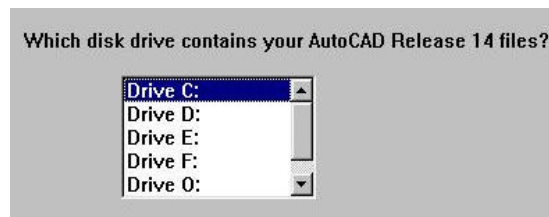
* The next menu warns for removal of any/all KIP drivers. It is unlikely you have any other KIP drivers installed in AutoCAD. If you do, remove them as instructed. Click 'OK' to continue.

* Install will prompt you to shut-down AutoCAD before continuing. Click 'OK' when ready.

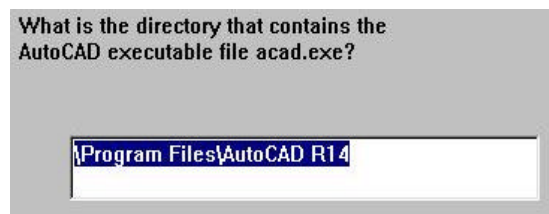
* Some information will be needed before continuing. Install notifies you of what you need. Typically the defaults are sufficient if AutoCAD is installed at your workstation and not shared from a server. If the AutoCAD program *is not installed at your workstation locally*, contact your network administrator to determine the location. Click 'OK' when ready.



* You will now be prompted for the location of AutoCAD 14. If installed locally, default values are generally correct. Select the appropriate drive letter (i.e. C: if local) and click 'OK' to continue.



* Next, you will be prompted for the location of acad.exe, the main AutoCAD 14 program file. Select the appropriate location (again, default values are generally fine if installed locally); Click 'OK'.

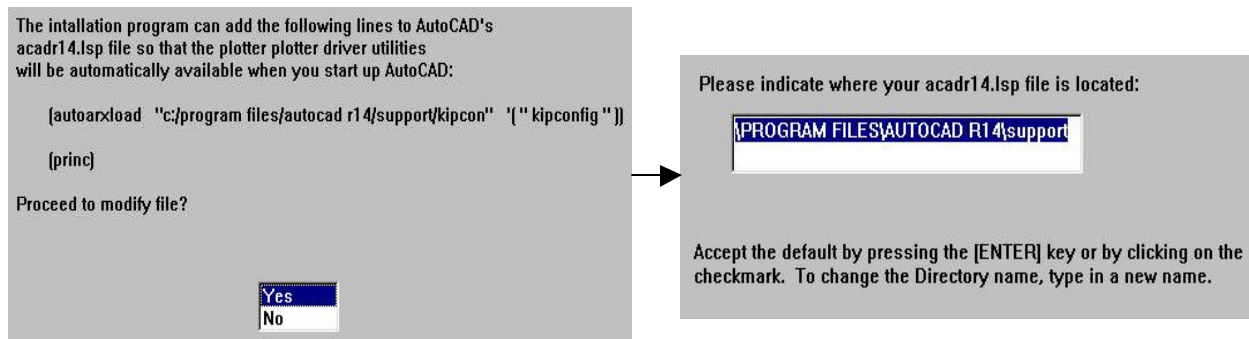


* Install will now prompt for a location to install the ADI main driver files. Click 'OK' to accept the default value.

* The next menu asks for the location of AutoCAD "ARX" and "DCL" files. Again, accept default values if AutoCAD is installed locally. Click 'OK' to continue



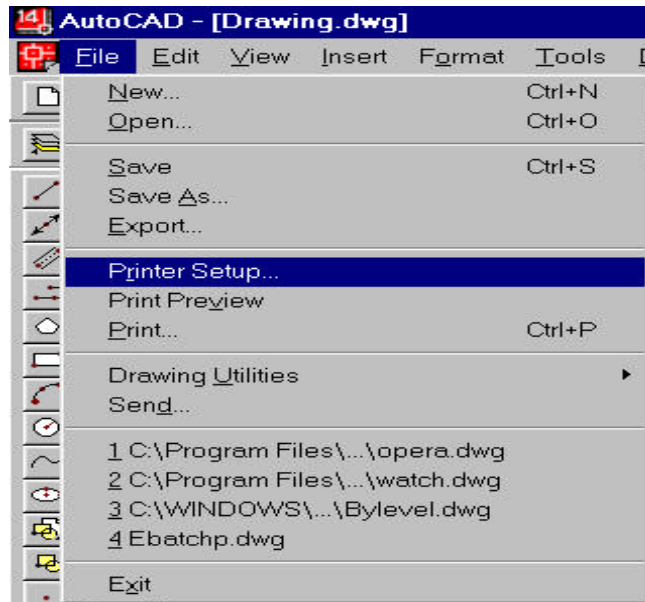
* The next two screens ask for permission to modify AutoCad's LSP file, and also it's location. This will allow the user to enter 'KIPCONFIG' at the AutoCAD command prompt to access/change driver settings. Select 'Yes' and Click 'OK' for both of these.



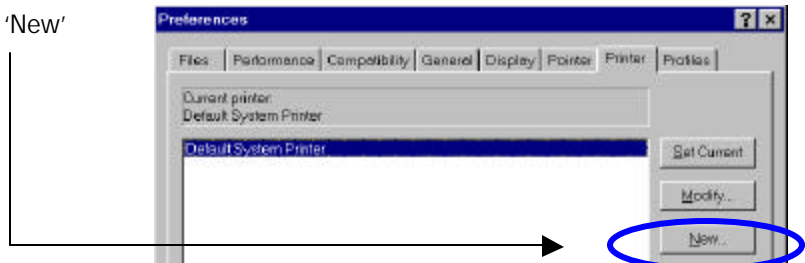
* All subsequent screens simply notify the user that the install will take place and to confirm this. Click 'OK' to finalize the install process.

Once the install procedure is complete, start AutoCAD and follow these simple steps:

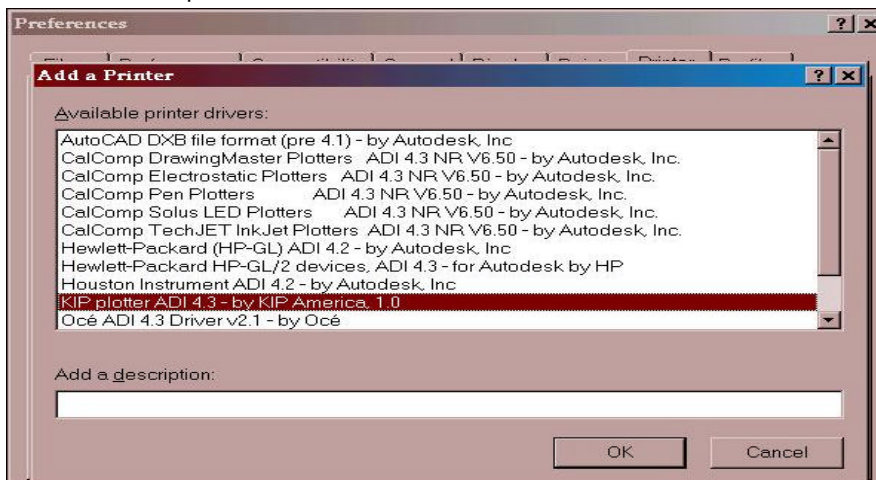
1. Click on the file menu near the top of the screen and select 'Printer set-up'



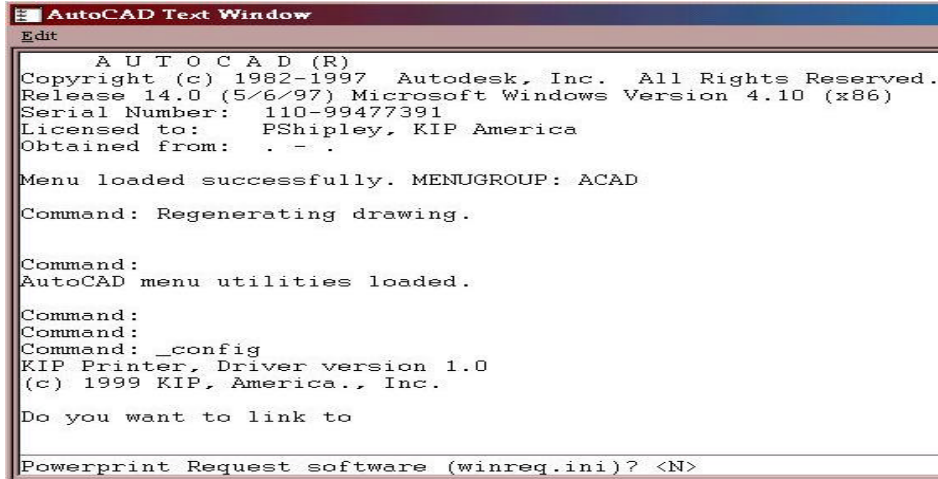
2. From the menu of choices, select 'New'



3. Select the KIP plotter ADI 4.3 from the available devices, and click 'OK'



- An AutoCAD text window will appear, asking you to link with the KIP Powerprint Windows Request initialization file. If you are not familiar with Powerprint Request, or the location of this initialization file, contact your network administrator. Generally, if many users employ Powerprint Request, a *shared* initialization file is in use, located on a network hard drive. If Powerprint Request has been installed locally, the default location of this initialization file is C:\Program Files\Windows Request\winreq.ini



- Browse to the location of your Powerprint Request initialization file when prompted.
- If you opt *not* to link with Powerprint Request, certain features of the KIP ADI driver will not be available to you (i.e. real-time printer status, password protected pull-down menus, on-the-fly stamping, and automated spooling). **This document assumes that Powerprint Request is utilized and installed properly.** An example of a functioning Powerprint Request initialization file is included near the end of this document for reference. Installation instructions and further documentation for Powerprint Request are located on your Powerprint software compact disc that came with your KIP system.
- Next, you will be prompted for an output method. **(Note: If you have multiple KIP printers/plotters, you will be asked to make a device selection.)**

```

Choice Machine Type
-> 1. 9900
    2. 9820

Enter choice for machine type, 1 or 2 <1>:

```

If you wish to use the KIP ADI for multiple machines, you will need to install the driver for each printer/plotter. After completing the first install, modify the 'KIP printer' name in AutoCAD in your list of available device to match the KIP machine type. Then follow these install instructions install another iteration of the ADI driver.

Because AutoCAD interacts with Powerprint Request, as a general rule, select the first output option.

```
Choice  Output Method
-> 1.  Direct to o:\Monpath1\Request
    2.  Use AutoCAD to output to port, network or LPD printer
-----
Enter choice for output method, 1 or 2 <1>:
```

(LPD printing is available as discussed previously. Specifics on configuring LPD printing can be found in [Digital Support Bulletin NT-99-002R](#), and is attached near the end of this document for reference).

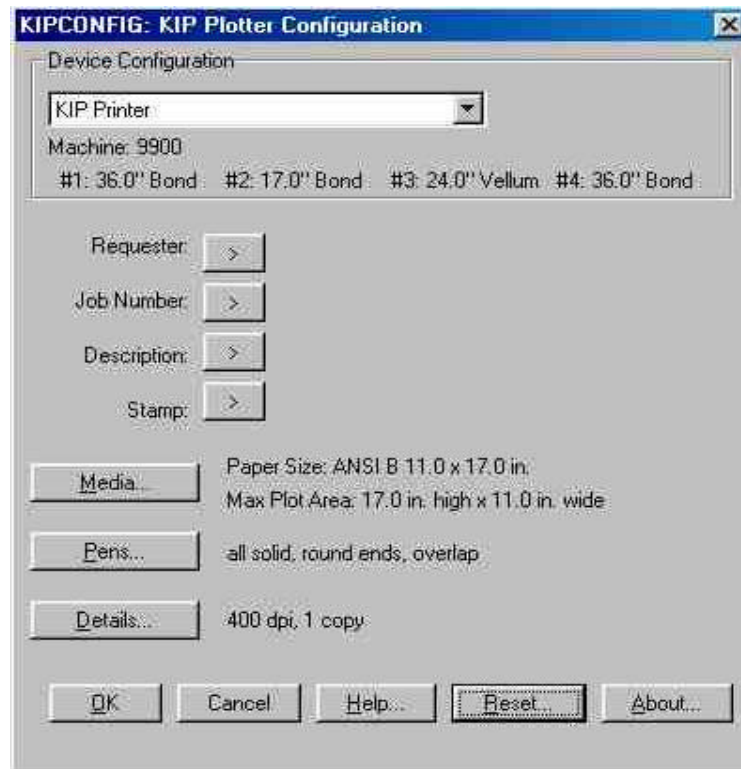
8. When asked to make any further changes select 'No'. Typing KIPCONFIG at the AutoCAD command line allows for easy modification of paper size/orientation, pen assignments, etc.
9. Installation is complete.

3. Configuration

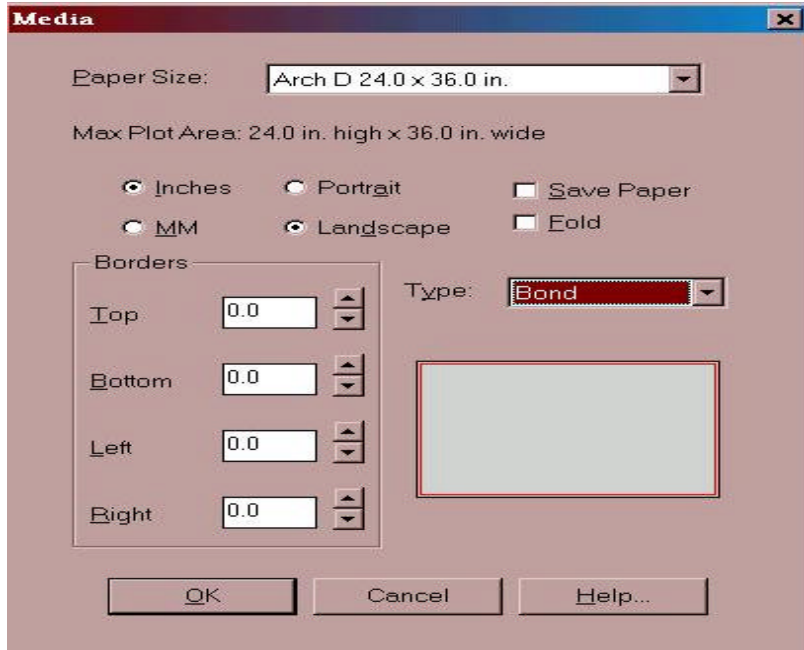
In order to access the wide-array of features included with KIP ADI driver, type KIPCONFIG at the AutoCAD command prompt. A **G**raphical **U**ser **I**nterface will appear with several options.

Displayed only if
Linked with Powerprint Request

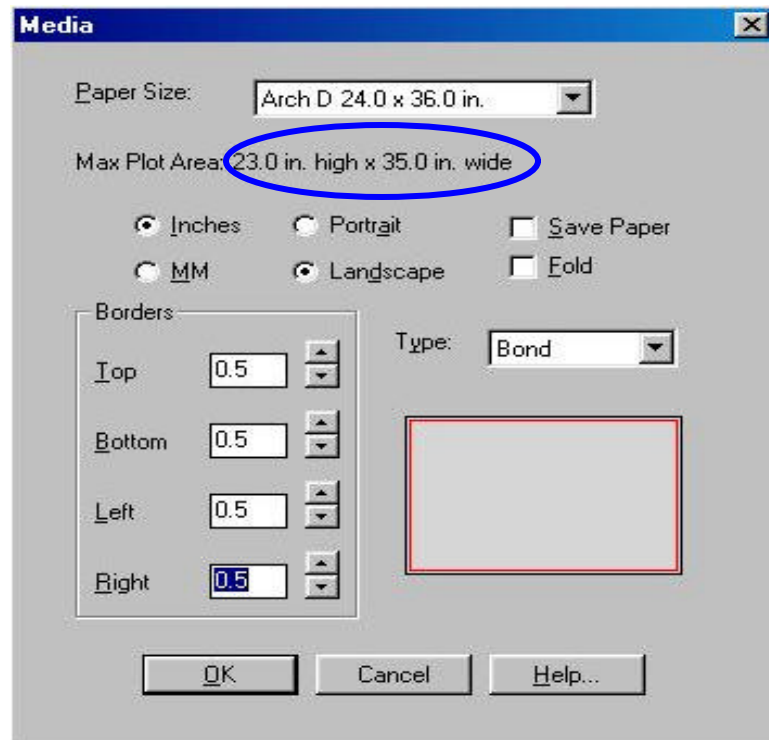
Click on these
buttons to
configure
driver settings.



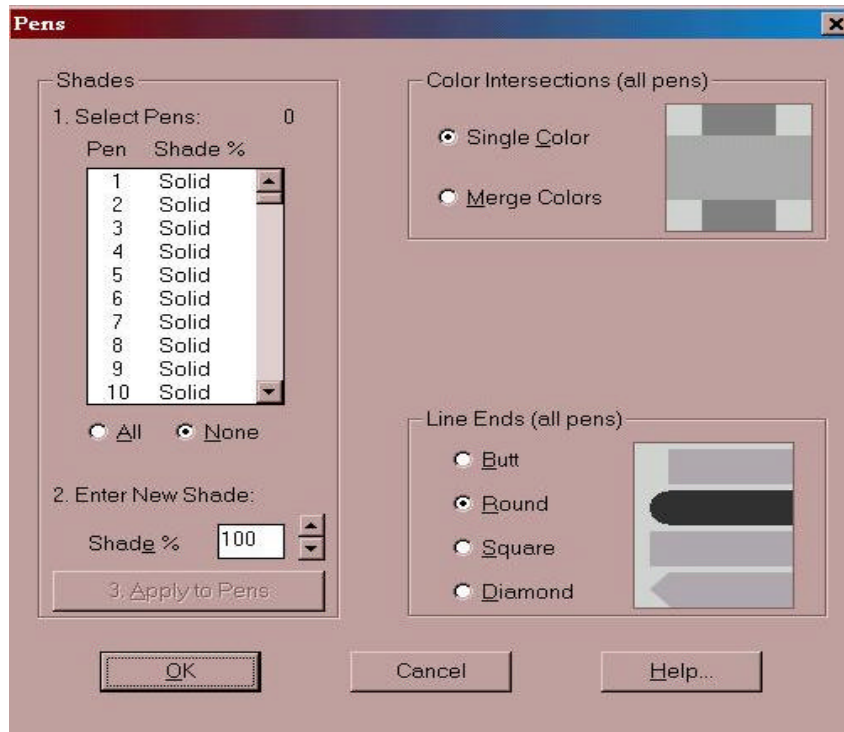
Clicking the **Media** button allows the user to configure paper size, media type, orientation, english/metric unit selection, establish borders, and activate optional folder settings.



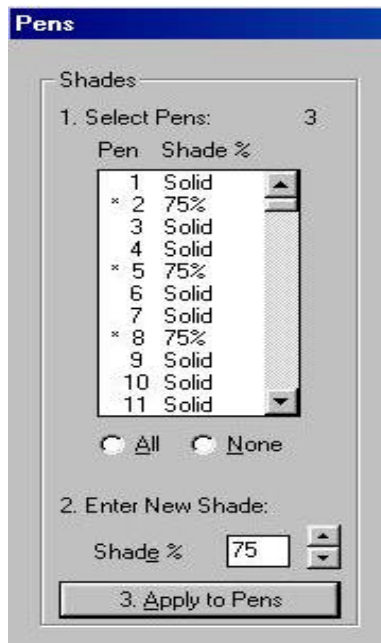
When setting borders, it is important to understand that paper size remains intact. The KIP ADI driver simply reduces the available print area, as shown below with a .5" border.



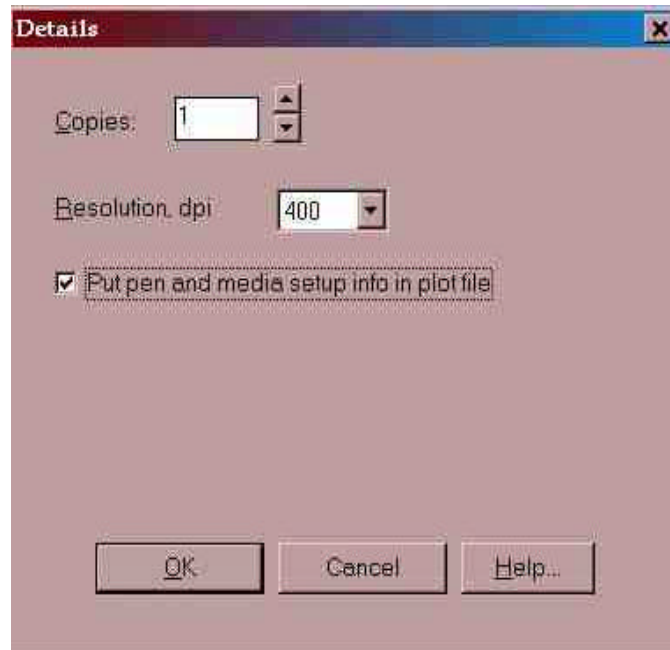
Clicking the **Pens** button allows the user to configure pen shading values, line-end types, and line-merge settings.



When making pen modifications, you can select multiple pens with a single click. The chosen pens will now have an asterisk displayed and are considered modifiable. Select desirable shade percentage, and click 'Apply to Pens' to update pen table information.

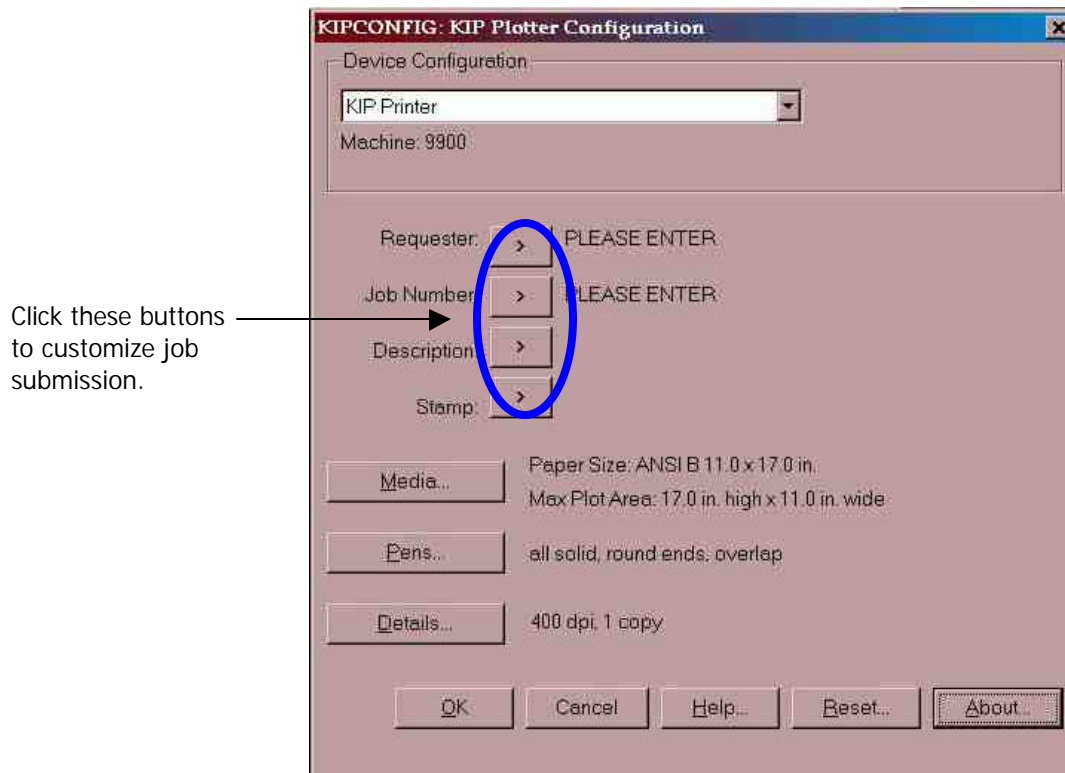


Clicking the **Details** button allows the user to select **number of copies**, and printer resolution in **dots per inch**. A check-box is also provided to specify whether any/all options should be written directly to the resulting plotfile that any digital KIP printer can recognize. The **HP-RTL density** slide-bar controls how the KIP printer/plotter handles embedded raster images (0 –lightest to 100 darkest). When **Raster Photo Mode** is enabled, a special dithering process is activated to obtain high-quality output when dealing with embedded photographic images (i.e. overhead photography)

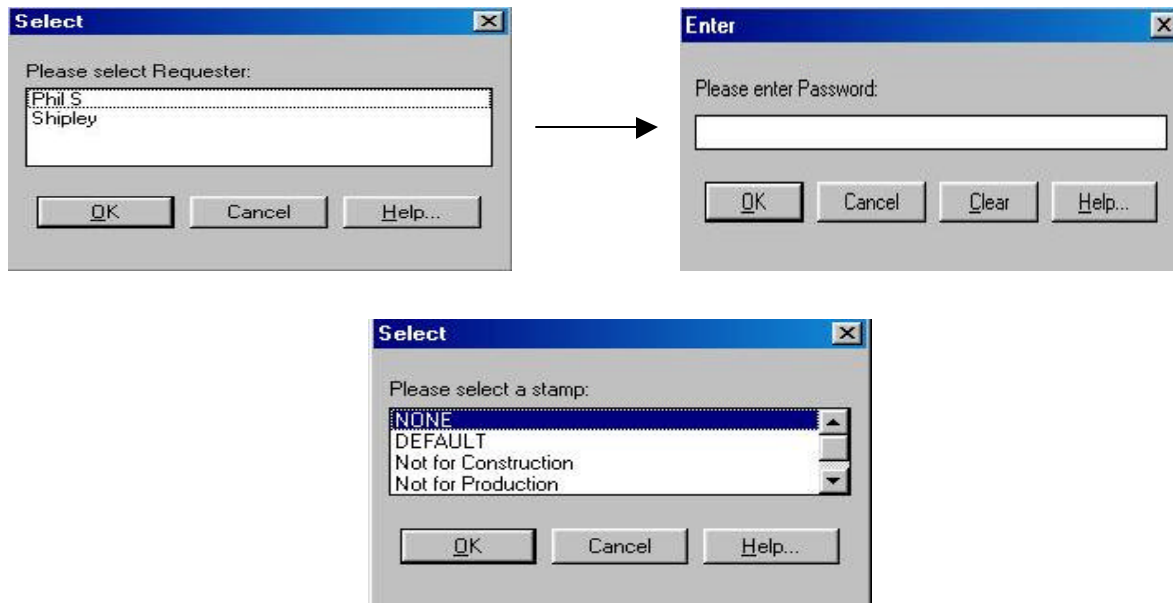


[Need new screen shot needed here]

The KIP ADI driver allows you to customize your print job by specifying **requester information**, **job information**, **job description**, and **stamp** options.



If you have linked the KIP ADI driver with Powerprint Request, Requester and Job Number function as selectable, password protected requirements. Stamping allows you to select available stamps, again *only if linked to Powerprint Request*.



These options are specifically linked to the KIP Powerprint Request software. **Requester and Job Number** fields can be required and/or password protected for security purposes. These two options, along with the **Description** field (not password protected) are logged on the KIP controller for *each* print request from AutoCAD, and can be used for tracking/billing/consumption reporting. This data is stored in the ASCII .LOG file located in the logdir folder. The stamping feature allows the user to select a ***pre-designed stamp created through the Powerprint Request software and stored on the KIP controller***. This is important because the KIP ADI driver assumes that all stamp information (text style, graphics, rotation, positioning and screening) resides on the KIP controller. For more information on how to design stamps, and where they reside, see your PowerPrint Manual.

NOTE: You can still utilize Requester and Job Number, when not linked to Powerprint Request, however they will not be password protected and/or required